

1600 & 1700


Please turn to our **Company Profile** and **Level Switch Selection Guide** to learn more of the advantages in specifying **Thomas Products Ltd.** sensors.

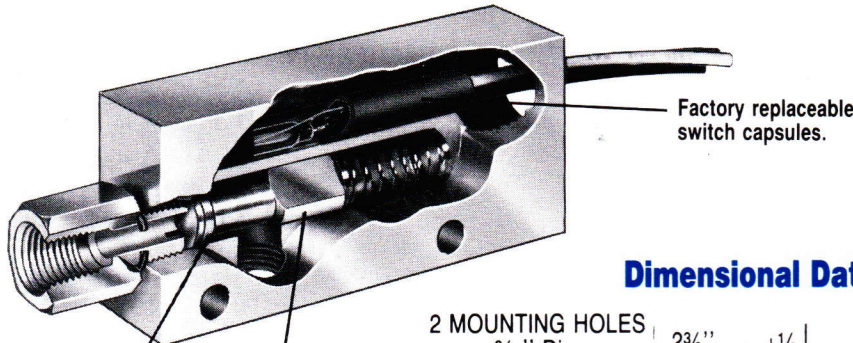
FIXED SET POINTS, 1/4" NPT, BRASS & SST

Model 1600

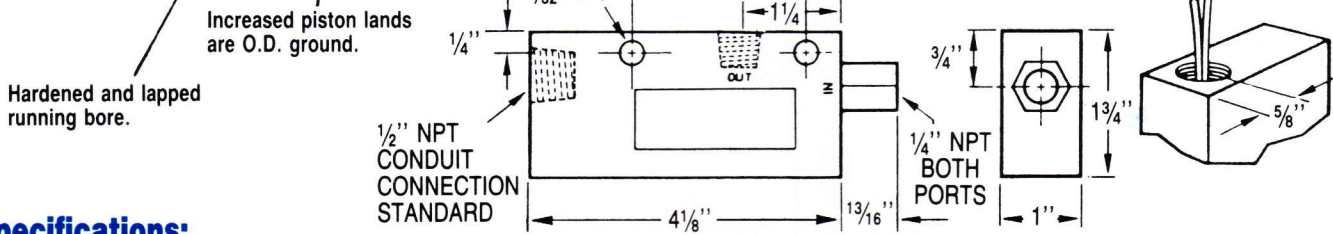
- Set points in water from .1 GPM to 1.5 GPM.
- Set points in air from .06 SCFM to 8 SCFM.

Applications:

- UL Recognized (Note 4) 
- Machine Tool Industry
- Lubrication Systems
- Lasers



Dimensional Data: Model 1600 & 1700



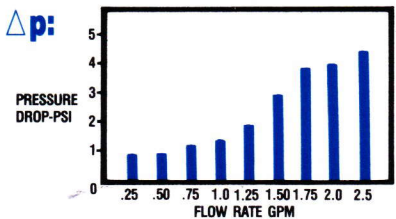
Specifications:

| Housing | Piston | Spring | "O" Ring | Reed Switch | Wire | Oper. Temp. | Oper. Pres. | Proof Load | Burst Strength | Set Pt. Accur. | Set Pt. Diff. | Repeatability |
|------------------------|--|------------|--------------|--|--|---|--------------|--------------|----------------|-------------------------------------|---------------------|-------------------------|
| Brass or 316 SST | Polysulfone <i>See Note 15</i> | 316 SST | Viton "A" | 20 Watt SPDT <i>See Notes 4, 5</i> | 18 AWG 24" Lg. Poly- meric <i>See Notes 6, 7</i> | w/ Brass or SST Piston -20°F to +300°F <i>See Note 8</i> | 1000 PSIG | 2500 PSIG | 5000 PSIG | ± 10% MAX. <i>See Note 18</i> | 1600 15% MAX. | 1% Max. Deviation |
| | Brass <i>See Notes 12, 14, 16</i> | | | | | 1700 20% MAX. | | | | | | |
| | 316 SST <i>See Notes 12, 14, 17</i> | | | | | | | | | | | |

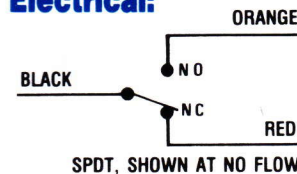
Part No.

| SIZE NPT | FLOW SET GPM <i>Notes 1-3, 9, 10</i> | BRASS Housing | PISTON P/N Specify | 316 SST Construction |
|----------|---|---------------|--------------------|----------------------|
| 1/4" | .1 | 12600 - _____ | _____ | 12609 |
| | .25 | 12601 - _____ | _____ | 12610 |
| | .5 | 12602 - _____ | _____ | 12611 |
| | .75 | 12603 - _____ | _____ | 12612 |
| | 1.0 | 12604 - _____ | _____ | 12613 |
| | 1.5 | 12605 - _____ | _____ | 12614 |

Pressure Drop Δp: Model 1600



Electrical:



Reed switch shown in NO FLOW condition.

Switch Ratings... Max Resistive Load

| V.A. | VOLTS | AMPS DC | AMPS AC | AMPS AC MAX |
|------|-------|---------|---------|-------------|
| 20 | 0-50 | .4 | .4 | 1.0 |
| | 120 | .15 | .16 | |
| | 240 | .06 | .08 | |

Switch Rating of UL Recognized Unit 20 VA: 120-240 VAC Pilot Duty

PISTONS FOR BRASS OR 316 SST HOUSINGS:

