

# 1801 p/n 45325-B

Indoor Pump Control

Patent No. 10,636,596

(NOTE: 1801 is the most used residential model)



Line cord extends nine feet. Plug into standard 120 VAC receptacle.

Single receptacle is switched on by the flow switch.




Spoked Orifice  
Patent No. 10,323,664

## 1801 Features\*

- 1" Slip Ports / Adapters Available On Page Six.
- Calibrated @ 0.5 GPM On Decreasing Flow.
- Flow Set Points Available To 6.0 GPM.
- Locking Wire For Easy Disassembly and Cleaning.
- True-Flow Switch Design Utilizes an SST Return Spring For Any Mounting Attitude.
- Input 120 VAC / Output 120 VAC 10A 1/2 HP.
- Also Available In 240 VAC Input/Output.

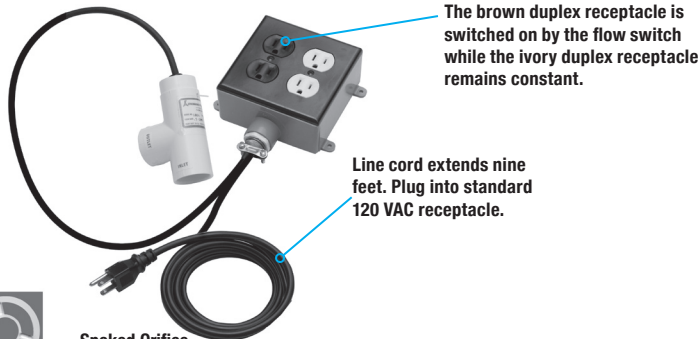
Call or go online to order

UL File E86797  
Listed 41EA 

# 1804 p/n 47651-A

Indoor Pump Control

Patent No. 10,636,596



The brown duplex receptacle is switched on by the flow switch while the ivory duplex receptacle remains constant.

Line cord extends nine feet. Plug into standard 120 VAC receptacle.



Spoked Orifice  
Patent No. 10,323,664

## 1804 Features\*

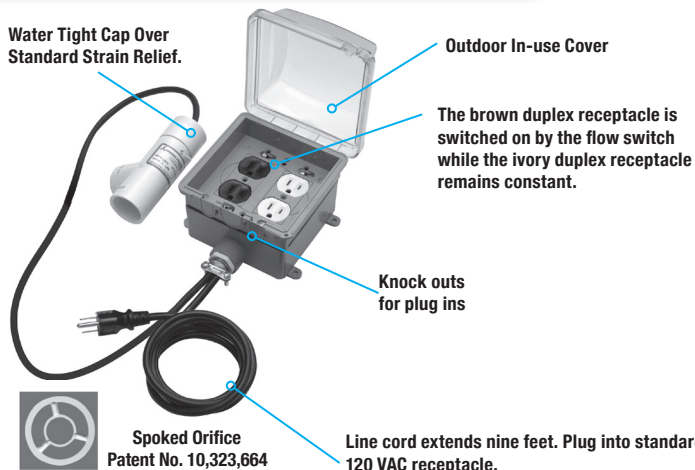
- 1" Slip Ports / Adapters Available On Page Six.
- Calibrated @ 0.5 GPM On Decreasing Flow.
- Flow Set Points Available To 6.0 GPM.
- Locking Wire For Easy Disassembly and Cleaning.
- True-Flow Switch Design Utilizes an SST Return Spring For Any Mounting Attitude.
- Input 120 VAC / Output 120 VAC 10A 1/2 HP.
- Also Available In 240 VAC Input/Output.

Call or go online to order

# 1804 W p/n 47650-A

Outdoor Pump Control

Patent No. 10,636,596



Water Tight Cap Over Standard Strain Relief.

Outdoor In-use Cover

The brown duplex receptacle is switched on by the flow switch while the ivory duplex receptacle remains constant.

Knock outs for plug ins

Line cord extends nine feet. Plug into standard 120 VAC receptacle.



Spoked Orifice  
Patent No. 10,323,664

## 1804 W Features\*

- Has Water Tight Cap Over Standard Strain Relief.
- 1" Slip Ports / Adapters Available On Page Six.
- Flow Set Points Available To 6.0 GPM.
- Locking Wire For Easy Disassembly and Cleaning.
- Locking Cover To Protect Accidental Unplugging.
- Calibrated @ 0.5 GPM On Decreasing Flow.
- True-Flow Switch Design Utilizes an SST Return Spring For Any Mounting Attitude.
- Input 120 VAC / Output 120 VAC 10A 1/2 HP.
- Also Available In 240 VAC Input/Output.

Call or go online to order

\* Detailed specifications for all products and accessories can be found on pages five and six.